

SUMMERWOOD SUBDIVISION

PHASE I

WOODCREST SUBDIVISION
VOL. 34, PG. 16
LAKE COUNTY PLATS

SUNSET VIEW ALLOTMENT
VOL. L, PG. 70
LAKE COUNTY PLATS

OPEN SPACE
BLOCK 'A'
15.244 AC.

OPEN SPACE
BLOCK 'C'
0.241 AC.

FUTURE PHASE
12.042 AC.

OPEN SPACE
BLOCK 'B'
11.248 AC.

FUTURE PHASE
42.008 AC.

FUTURE PHASE
526.09'

526.09'

567.42'

567.42'

567.42'

567.42'

567.42'

567.42'

567.42'

567.42'

567.42'

567.42'

567.42'

567.42'

NOTE:
ALL IRON PINS SET ARE A 5/8" DIA. IRON PIN
30" LONG WITH A CT CAP.

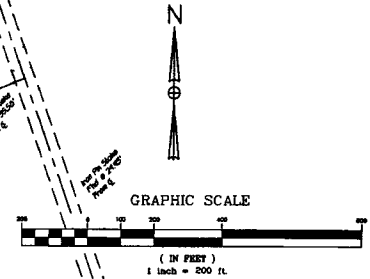
PLAT CONTROL COORDINATES:
PROJECT DATUM IS ON THE LAKE COUNTY GEODETIC
SURVEY (SEPTEMBER 1993) WHICH IS REFERENCED
TO NAD83 (OHIO 3401 NORTH).
LAKE COUNTY MONUMENTS #0043 & #0049 USED
FOR BASE CONTROL.



CT Consultants
engineers|architects|planners
3500 Center Court, Waukegan, Ohio 44091
419.921.2000 www.ctconsultants.com

Crossroads: Lake County Adolescent Counseling Service
Dec. 27, 1996
Doc. No. 960048857
P.P. No. 08A-002-0-00-08-0

Crossroads: Lake County Adolescent Counseling Service
Dec. 27, 1996
Doc. No. 960048857
P.P. No. 08A-002-0-00-08-0



DATE: 01-13-05 - TIME: 15:40 - H:\2003\03174\survey\recomp1.dwg

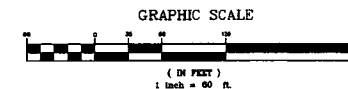
SUMMERWOOD SUBDIVISION PHASE I

PLAT CONTROL COORDINATES:

POINT	GRID NORTH	GRID EAST	GROUND NORTH	GROUND EAST
SPOC3	728187.8917	2321866.5283	728190.8683	2321939.7924
SPOC4	727491.3483	2321879.5519	727514.3035	2321952.8185
SPOC6	727166.5987	2322057.0506	727189.5437	2322130.3208

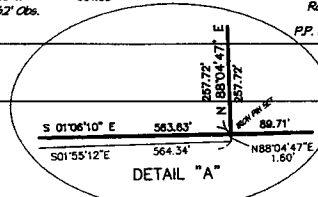
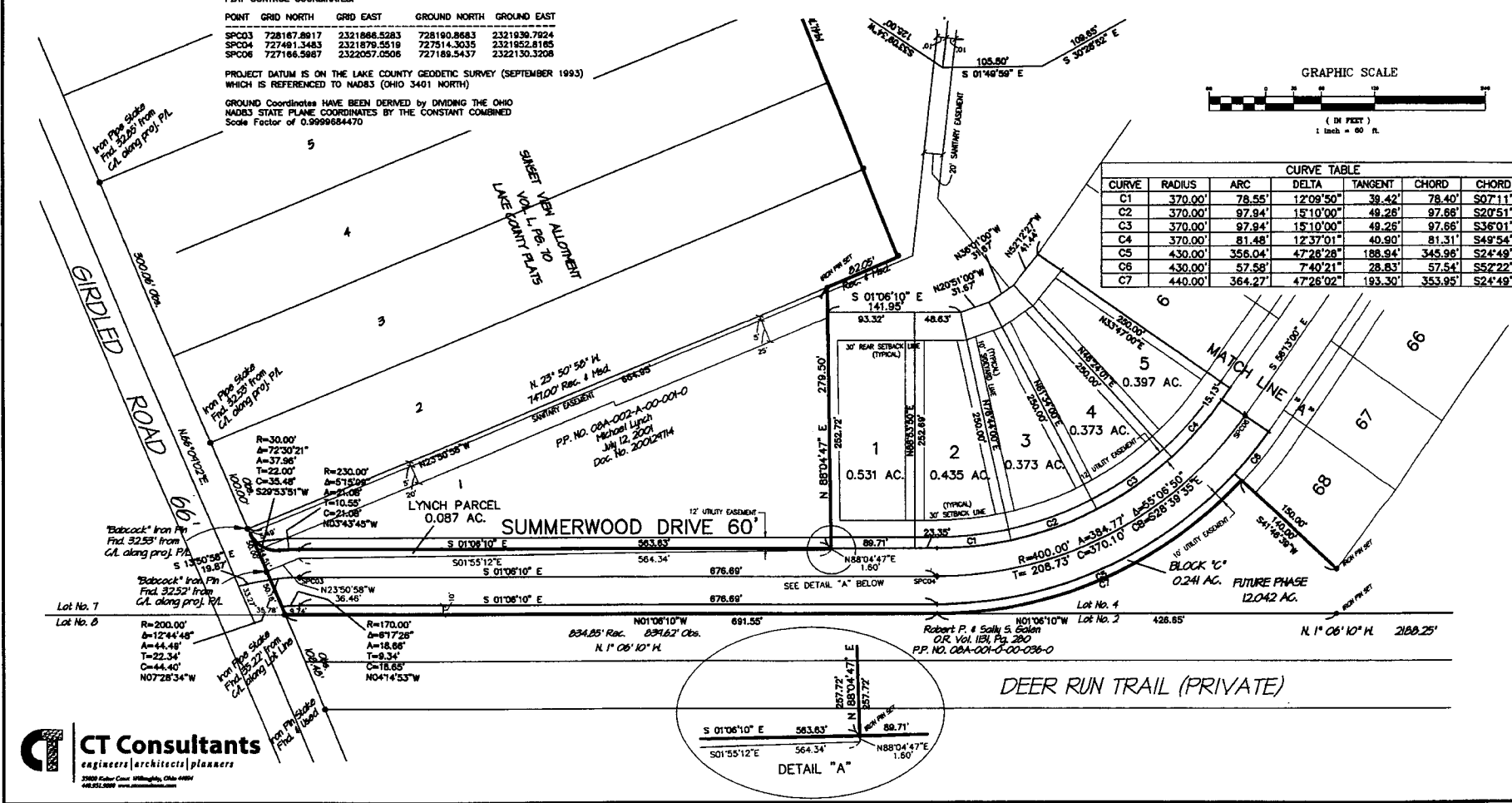
PROJECT DATUM IS ON THE LAKE COUNTY GEODETIC SURVEY (SEPTEMBER 1993) WHICH IS REFERENCED TO NAD83 (OHIO 3401 NORTH)

GROUND Coordinates HAVE BEEN DERIVED BY DIVIDING THE OHIO NAD83 STATE PLANE COORDINATES BY THE CONSTANT COMBINED Scale Factor of 0.9999684470



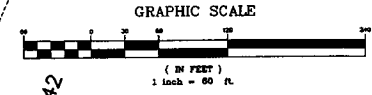
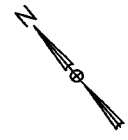
CURVE TABLE						
CURVE	RADIUS	ARC	DELTA	TANGENT	CHORD	CHORD BR.
C1	370.00'	78.55'	12°09'50"	39.42'	78.40'	S07°11'05"E
C2	370.00'	97.94'	15°10'00"	48.28'	97.88'	S20°51'00"E
C3	370.00'	97.94'	15°10'00"	48.28'	97.88'	S36°01'00"E
C4	370.00'	81.48'	12°37'01"	40.90'	81.31'	S49°54'30"E
C5	430.00'	356.04'	47°28'28"	188.94'	345.96'	S24°49'24"E
C6	430.00'	57.58'	7°40'21"	28.83'	57.54'	S52°22'49"E
C7	440.00'	364.27'	47°26'02"	193.30'	353.95'	S24°49'11"E

DATE: 1-27-05 - TIME: 09:55 - H:\2003\03174\survey\reco\platt.dwg



CT Consultants
engineers|architects|planners
3500 Euler Court, Wausau, Ohio 44890
440.951.0000 www.ctconsultants.com

SUMMERWOOD SUBDIVISION PHASE I



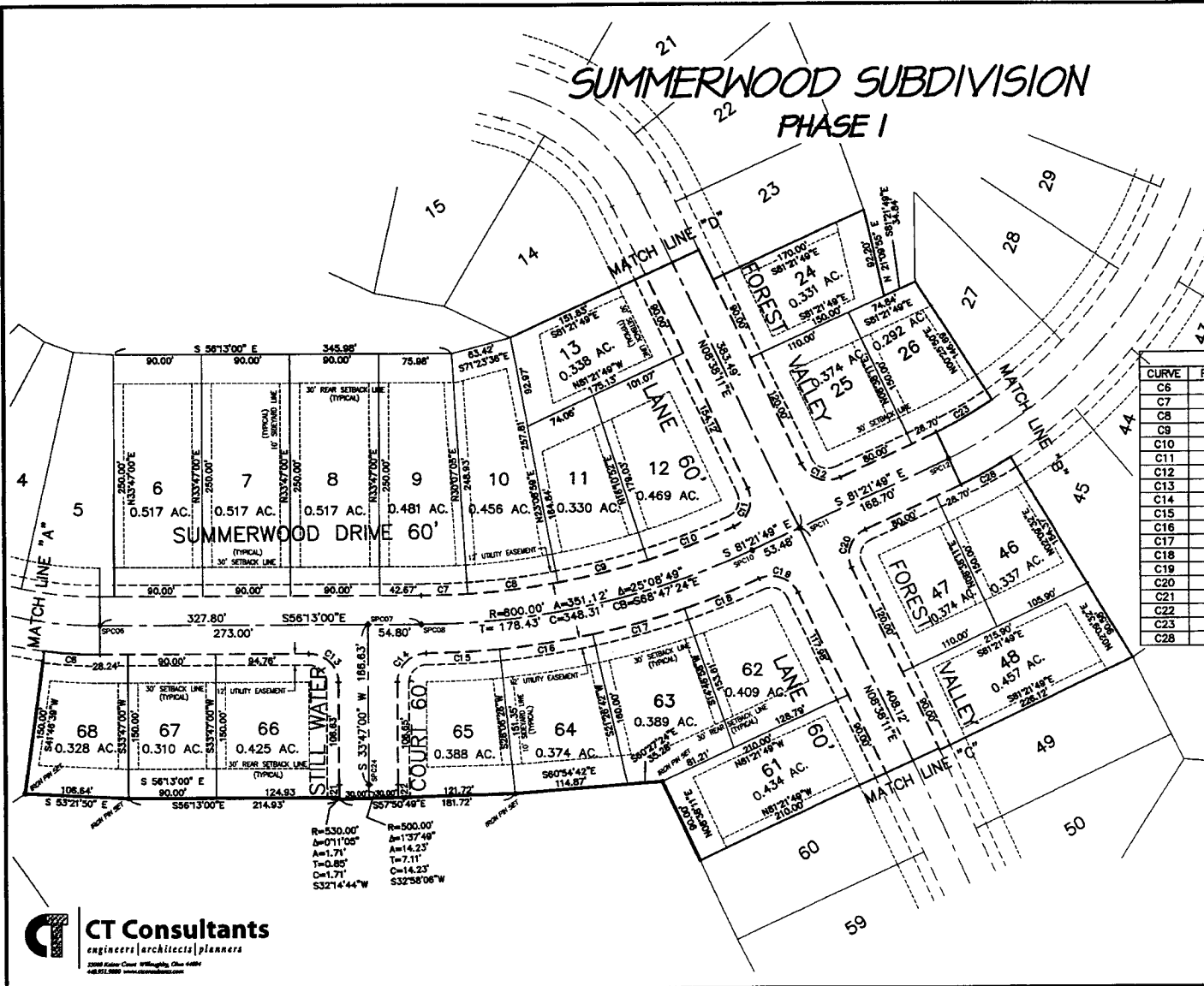
CURVE TABLE					
CURVE	RADIUS	ARC	DELTA	TANGENT	CHORD BR.
C6	430.00'	57.58'	7°40'21"	28.83'	57.54' S52°22'49"E
C7	770.00'	49.26'	3°39'55"	24.64'	49.25' S58°02'58"E
C8	770.00'	93.65'	6°58'06"	46.88'	93.59' S63°21'58"E
C9	770.00'	93.65'	6°58'06"	46.88'	93.59' S70°20'04"E
C10	770.00'	94.61'	7°02'23"	47.36'	94.55' S77°20'19"E
C11	30.00'	47.39'	90°30'18"	30.27'	42.61' N53°53'20"E
C12	30.00'	47.12'	90°00'00"	30.00'	42.43' S36°21'48"E
C13	30.00'	47.12'	90°00'00"	30.00'	42.43' N11°13'00"W
C14	30.00'	46.84'	89°39'14"	29.82'	42.30' S78°36'37"W
C15	830.00'	77.21'	5°18'47"	38.63'	77.18' S59°13'40"E
C16	830.00'	96.51'	6°39'44"	48.31'	96.46' S65°13'25"E
C17	830.00'	96.51'	6°39'44"	48.31'	96.46' S71°53'09"E
C18	830.00'	82.74'	5°42'43"	41.41'	82.71' S78°04'23"E
C19	30.00'	46.90'	89°33'55"	29.77'	42.27' N36°08'47"W
C20	30.00'	47.12'	90°00'00"	30.00'	42.43' S53°38'11"W
C21	530.00'	13.37'	1°28'44"	6.69'	13.37' S33°03'38"W
C22	470.00'	13.37'	1°37'49"	6.69'	13.37' S72°58'08"W
C23	470.00'	67.31'	8°12'21"	33.71'	67.26' S85°28'00"E
C28	530.00'	59.92'	6°28'39"	29.99'	59.89' S84°36'08"E

PLAT CONTROL COORDINATES:

POINT	GRID NORTH	GRID EAST	GROUND NORTH	GROUND EAST
SPC06	727168.5887	2322057.0506	727189.5437	2322130.3208
SPC07	727014.8018	2322283.9450	727037.7420	2322357.2223
SPC08	726964.3283	2322329.4929	727007.6585	2322402.7717
SPC10	726856.3213	2322654.1947	726881.2586	2322727.4837
SPC11	726850.2914	2322707.0629	726873.2264	2322780.3536
SPC12	726824.9501	2322673.8416	726847.6943	2322847.1375
SPC24	726878.3123	2322191.2926	726899.2481	2322264.5670

PROJECT DATUM IS ON THE LAKE COUNTY GEODETIC SURVEY (SEPTEMBER 1993) WHICH IS REFERENCED TO NAD83 (OHIO 3401 NORTH)

GROUND Coordinates HAVE BEEN DERIVED BY DIVIDING THE OHIO NAD83 STATE PLANE COORDINATES BY THE CONSTANT COMBINED Scale Factor of 0.999984470



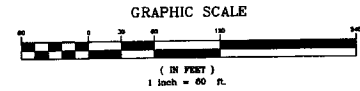
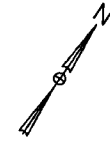
R=530.00'
A=01°12'04"
A=1.71'
T=7.11'
C=14.23'
D=1.71'
S3214°44'W

R=500.00'
A=137°49'
A=14.23'
T=7.11'
C=14.23'
D=1.71'
S32°58'06"W

DATE: 11-30-04 -- TIME: 15:11 -- H:\2003\03174\survey\records\plat.dwg



SUMMERWOOD SUBDIVISION PHASE I



CURVE TABLE						
CURVE	RADIUS	ARC	DELTA	TANGENT	CHORD	CHORD BR.
C23	470.00'	67.31'	8°12'21"	33.71'	67.26'	S85°28'00"E
C24	470.00'	96.14'	11°43'11"	48.24'	95.97'	N84°34'14"E
C25	470.00'	96.14'	11°43'11"	48.24'	95.97'	N72°51'03"E
C26	470.00'	96.14'	11°43'11"	48.24'	95.97'	N61°07'52"E
C27	470.00'	9.24'	1°07'35"	4.62'	9.24'	N54°42'29"E
C28	530.00'	59.92'	6°28'39"	29.99'	59.89'	S84°36'08"E
C29	530.00'	85.18'	9°12'30"	42.68'	85.09'	N87°33'17"E
C30	530.00'	85.18'	9°12'30"	42.68'	85.09'	N78°20'47"E
C31	530.00'	85.18'	9°12'30"	42.68'	85.09'	N69°08'17"E
C32	530.00'	85.18'	9°12'30"	42.68'	85.09'	N59°55'47"E
C33	530.00'	10.92'	1°10'50"	5.46'	10.92'	N54°44'07"E

BUILDING SETBACK ON S/L 35, 36 AND 37 WILL COMPLY WITH THE 100 FOOT RIPARIAN SETBACK ON BOTH SIDES OF THE STREAM

PLAT CONTROL COORDINATES:

POINT	GRID NORTH	GRID EAST	GROUND NORTH	GROUND EAST
SPC12	726824.9601	2322873.8416	726847.8943	2322847.1375
SPC14	726914.0389	2323241.7800	726938.9739	2323315.0875
SPC15	727225.2586	2323672.4274	727248.2055	2323745.7485

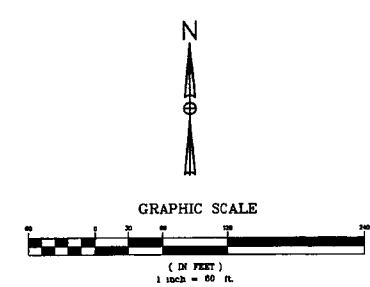
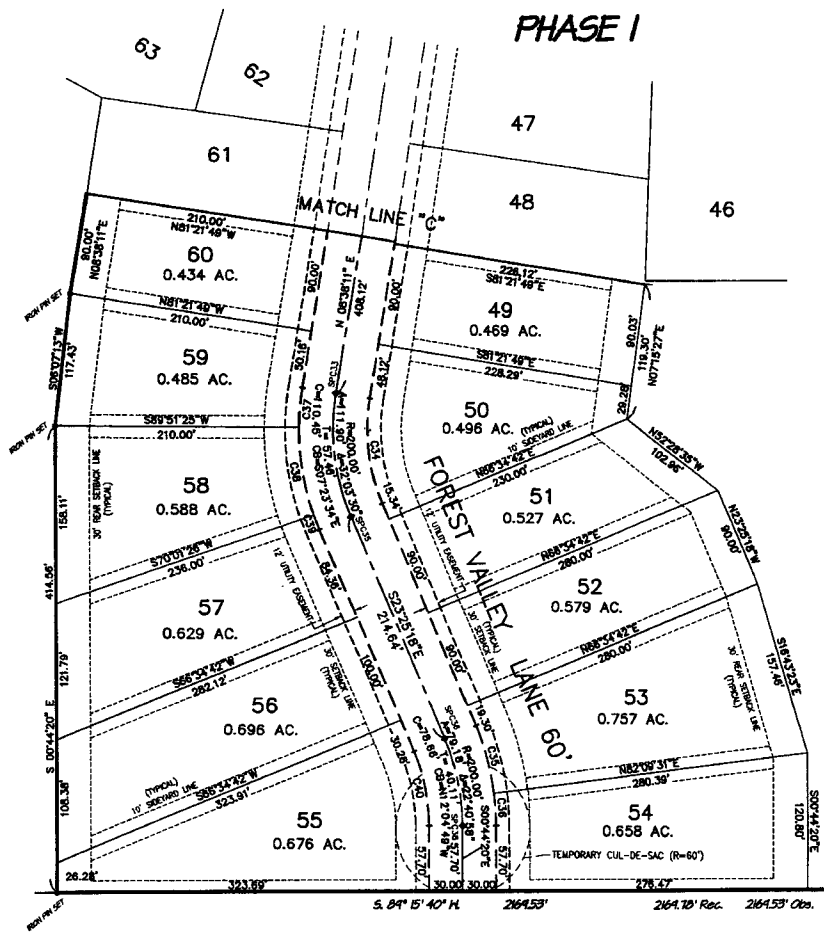
PROJECT DATUM IS ON THE LAKE COUNTY GEODETIC SURVEY (SEPTEMBER 1993) WHICH IS REFERENCED TO NAD83 (OHIO 3401 NORTH)

GROUND COORDINATES HAVE BEEN DERIVED BY DIVIDING THE OHIO NAD83 STATE PLANE COORDINATES BY THE CONSTANT COMBINED Scale Factor of 0.9999684470

DATE: 11-30-04 - TIME: 15:11 - H:\2003\03174\survey\recondplat.dwg



SUMMERWOOD SUBDIVISION PHASE I



CURVE TABLE						
CURVE	RADIUS	ARC	DELTA	TANGENT	CHORD	CHORD BR.
C34	170.00'	95.12'	32°03'30"	48.84'	93.88'	S07°23'34"E
C35	230.00'	62.54'	15°34'49"	31.47'	62.35'	N15°37'54"W
C36	230.00'	28.51'	7°06'09"	14.27'	28.49'	N04°17'24"W
C37	230.00'	35.24'	8°46'48"	17.86'	35.21'	S04°14'48"W
C38	230.00'	79.61'	19°49'59"	40.21'	79.22'	S10°03'34"E
C39	230.00'	13.83'	3°26'45"	6.92'	13.83'	S21°41'56"E
C40	170.00'	67.30'	22°40'58"	34.10'	66.86'	N12°04'49"W

PLAT CONTROL COORDINATES:

POINT	GRID NORTH	GRID EAST	GROUND NORTH	GROUND EAST
SPC33	726448.8157	2322845.7807	726469.7380	2322719.0584
SPC35	726337.2570	2322859.9917	726350.2058	2322733.2809
SPC36	726140.3415	2322745.3066	726163.2541	2322818.5985
SPC38	726063.4237	2322761.7687	726086.3339	2322835.0811

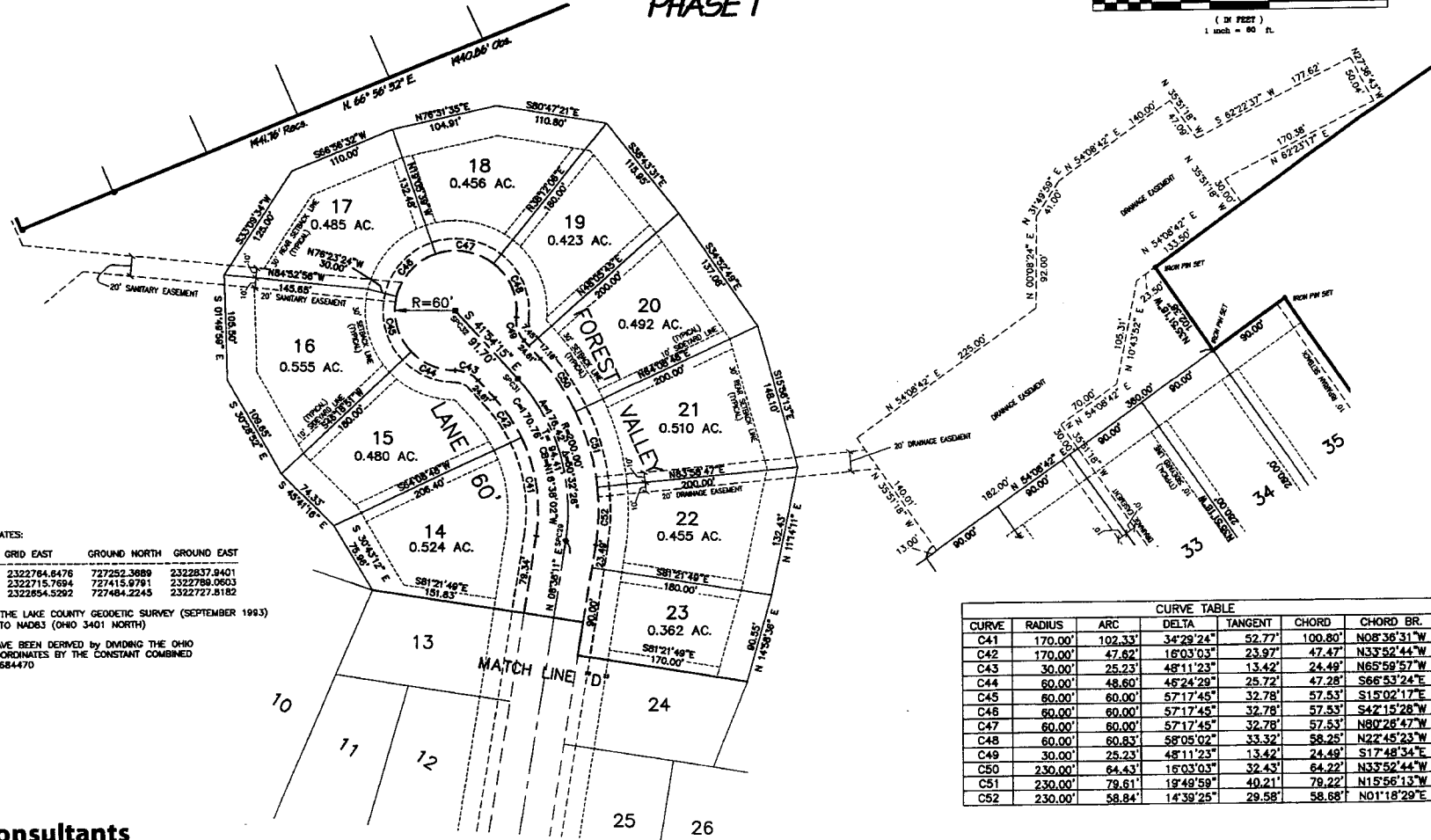
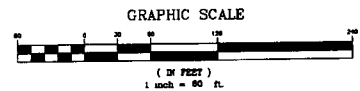
PROJECT DATUM IS ON THE LAKE COUNTY GEODETIC SURVEY (SEPTEMBER 1993) WHICH IS REFERENCED TO NAD83 (OHIO 3401 NORTH)

GROUND COORDINATES HAVE BEEN DERIVED BY DIVIDING THE OHIO NAD83 STATE PLANE COORDINATES BY THE CONSTANT COMBINED Scale Factor of 0.9999684470

DATE: 11-30-04 -- TIME: 16:11 -- H:\2003\03174\survey\recordplc1.dwg



SUMMERWOOD SUBDIVISION PHASE I



PLAT CONTROL COORDINATES:

POINT	GRID NORTH	GRID EAST	GROUND NORTH	GROUND EAST
SPC29	727229.4219	2322784.8476	727252.3889	2322837.9401
SPC31	727393.0270	2322715.7694	727415.9791	2322786.0603
SPC32	727461.2702	2322854.5292	727484.2245	2322727.8182

PROJECT DATUM IS ON THE LAKE COUNTY GEODETIC SURVEY (SEPTEMBER 1993) WHICH IS REFERENCED TO MAD63 (OHIO 3401 NORTH)

GROUND COORDINATES HAVE BEEN DERIVED BY DIVIDING THE OHIO MAD63 STATE PLANE COORDINATES BY THE CONSTANT COMBINED SCALE FACTOR OF 0.9999684470

CURVE TABLE						
CURVE	RADIUS	ARC	DELTA	TANGENT	CHORD	CHORD BR.
C41	170.00'	102.33'	34°29'24"	52.77'	100.80'	N08°36'31"W
C42	170.00'	47.62'	16°03'03"	23.97'	47.47'	N33°52'44"W
C43	30.00'	25.23'	48°11'23"	13.42'	24.49'	N65°59'57"W
C44	60.00'	48.60'	46°24'29"	25.72'	47.28'	S66°53'24"E
C45	60.00'	60.00'	57°17'45"	32.78'	57.53'	S15°02'17"E
C46	60.00'	60.00'	57°17'45"	32.78'	57.53'	S42°15'28"W
C47	60.00'	60.00'	57°17'45"	32.78'	57.53'	N80°28'47"W
C48	60.00'	60.83'	58°05'02"	33.32'	58.25'	N22°45'23"W
C49	30.00'	25.23'	48°11'23"	13.42'	24.49'	S17°48'34"E
C50	230.00'	64.43'	16°03'03"	32.43'	64.22'	N33°52'44"W
C51	230.00'	78.61'	19°49'59"	40.21'	78.22'	N15°56'13"W
C52	230.00'	58.84'	14°39'25"	29.58'	58.68'	N01°18'29"E

DATE: 11-30-04 - TIME: 15:11 - I:\2003\03174\survey\reoplat.dwg

