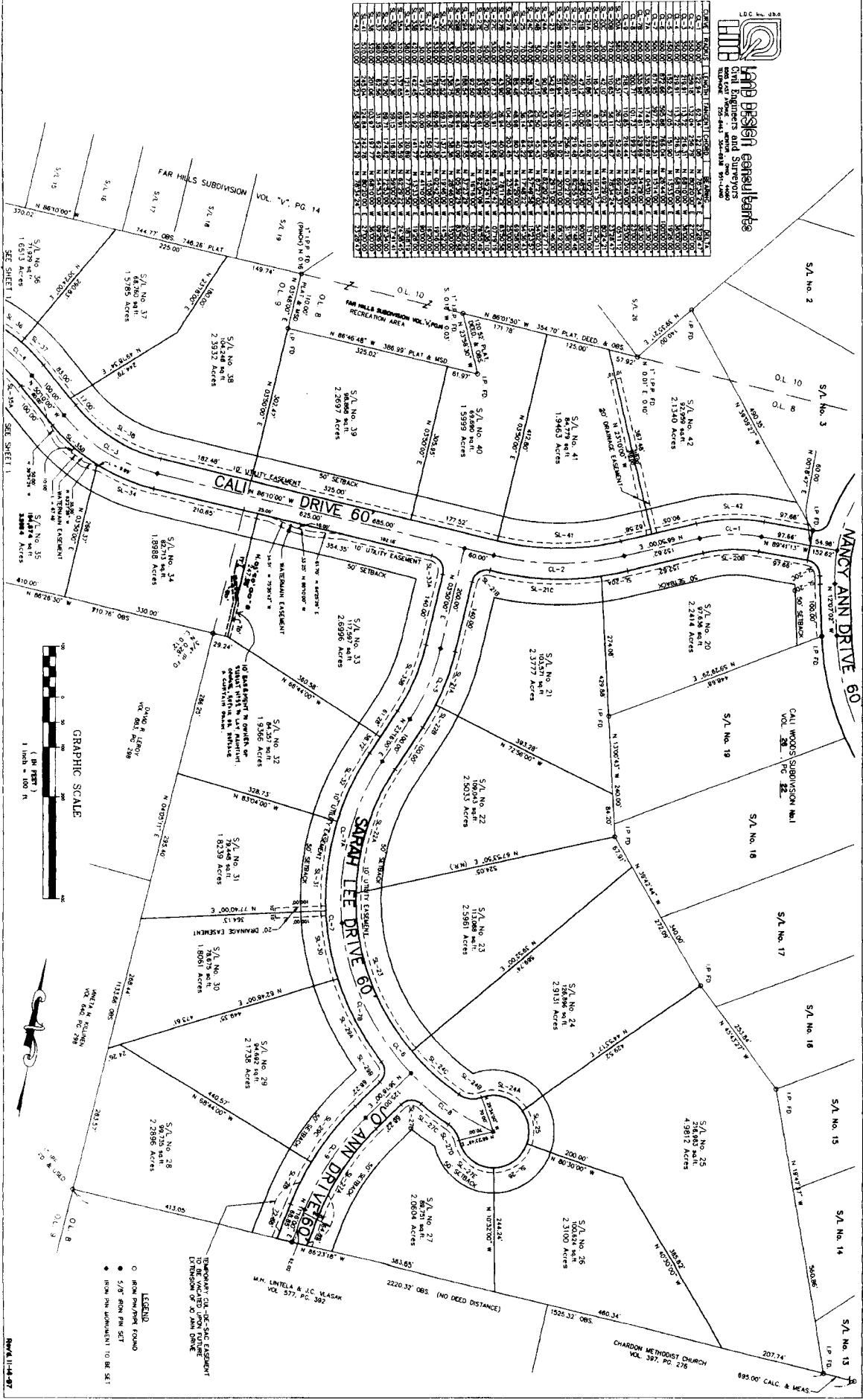






**FARD BISHOP CONSULTANTS**  
Civil Engineers and Surveyors  
1000 West 10th Street, Suite 100  
Ottawa, Ontario K1P 6E7  
Tel: (613) 237-1111  
Fax: (613) 237-1112

SL No.	Area (Acres)	Area (sq. ft.)	Area (sq. m.)
1	1.5813	134,200	10,000
2	2.1140	182,000	13,700
3	1.8988	163,000	12,100
4	2.3532	202,000	15,000
5	1.8988	163,000	12,100
6	2.3532	202,000	15,000
7	1.8988	163,000	12,100
8	2.3532	202,000	15,000
9	1.8988	163,000	12,100
10	2.3532	202,000	15,000
11	1.8988	163,000	12,100
12	2.3532	202,000	15,000
13	1.8988	163,000	12,100
14	2.3532	202,000	15,000
15	1.8988	163,000	12,100
16	2.3532	202,000	15,000
17	1.8988	163,000	12,100
18	2.3532	202,000	15,000
19	1.8988	163,000	12,100
20	2.3532	202,000	15,000
21	1.8988	163,000	12,100
22	2.3532	202,000	15,000
23	1.8988	163,000	12,100
24	2.3532	202,000	15,000
25	1.8988	163,000	12,100
26	2.3532	202,000	15,000
27	1.8988	163,000	12,100
28	2.3532	202,000	15,000
29	1.8988	163,000	12,100
30	2.3532	202,000	15,000
31	1.8988	163,000	12,100
32	2.3532	202,000	15,000
33	1.8988	163,000	12,100
34	2.3532	202,000	15,000
35	1.8988	163,000	12,100
36	2.3532	202,000	15,000
37	1.8988	163,000	12,100
38	2.3532	202,000	15,000
39	1.8988	163,000	12,100
40	2.3532	202,000	15,000
41	1.8988	163,000	12,100
42	2.3532	202,000	15,000
43	1.8988	163,000	12,100
44	2.3532	202,000	15,000
45	1.8988	163,000	12,100
46	2.3532	202,000	15,000
47	1.8988	163,000	12,100
48	2.3532	202,000	15,000
49	1.8988	163,000	12,100
50	2.3532	202,000	15,000
51	1.8988	163,000	12,100
52	2.3532	202,000	15,000
53	1.8988	163,000	12,100
54	2.3532	202,000	15,000
55	1.8988	163,000	12,100
56	2.3532	202,000	15,000
57	1.8988	163,000	12,100
58	2.3532	202,000	15,000
59	1.8988	163,000	12,100
60	2.3532	202,000	15,000
61	1.8988	163,000	12,100
62	2.3532	202,000	15,000
63	1.8988	163,000	12,100
64	2.3532	202,000	15,000
65	1.8988	163,000	12,100
66	2.3532	202,000	15,000
67	1.8988	163,000	12,100
68	2.3532	202,000	15,000
69	1.8988	163,000	12,100
70	2.3532	202,000	15,000
71	1.8988	163,000	12,100
72	2.3532	202,000	15,000
73	1.8988	163,000	12,100
74	2.3532	202,000	15,000
75	1.8988	163,000	12,100
76	2.3532	202,000	15,000
77	1.8988	163,000	12,100
78	2.3532	202,000	15,000
79	1.8988	163,000	12,100
80	2.3532	202,000	15,000
81	1.8988	163,000	12,100
82	2.3532	202,000	15,000
83	1.8988	163,000	12,100
84	2.3532	202,000	15,000
85	1.8988	163,000	12,100
86	2.3532	202,000	15,000
87	1.8988	163,000	12,100
88	2.3532	202,000	15,000
89	1.8988	163,000	12,100
90	2.3532	202,000	15,000
91	1.8988	163,000	12,100
92	2.3532	202,000	15,000
93	1.8988	163,000	12,100
94	2.3532	202,000	15,000
95	1.8988	163,000	12,100
96	2.3532	202,000	15,000
97	1.8988	163,000	12,100
98	2.3532	202,000	15,000
99	1.8988	163,000	12,100
100	2.3532	202,000	15,000



**VOL. 31-4-2**