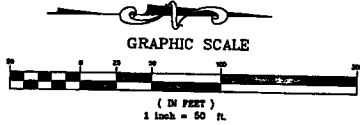


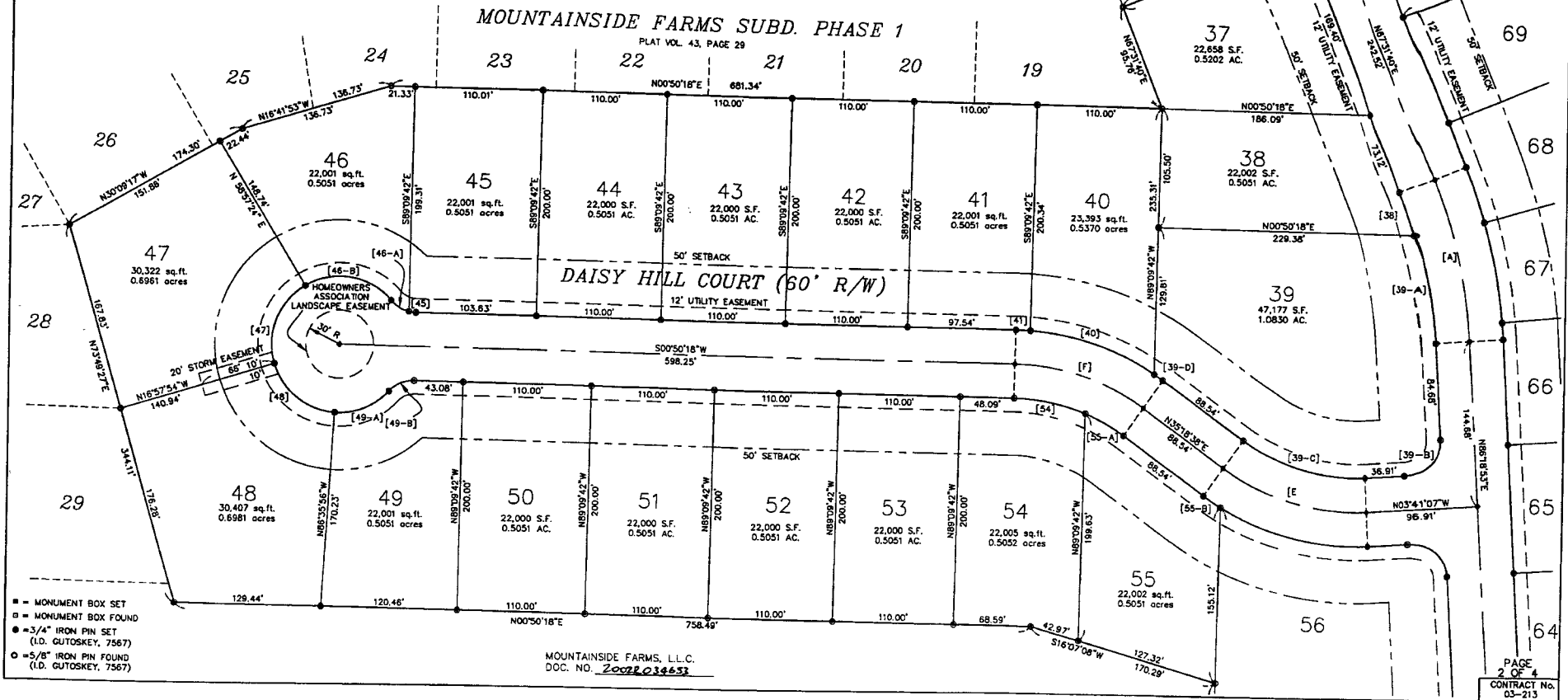
CURVE DATA						
CURVE	RADIUS	LENGTH	TANGENT	CHORD	BEARING	DELTA
A	450.00'	147.55'	24.44'	148.89'	N 76°51'17" E	18°47'31"
E	200.00'	136.12'	70.82'	133.51'	N 15°48'46" E	36°59'45"
F	200.00'	120.33'	62.05'	118.52'	N 18°04'28" E	34°28'20"
38	420.00'	40.96'	20.50'	40.95'	N 70°19'19" E	05°35'18"
39-A	420.00'	98.75'	48.59'	98.54'	N 79°42'55" E	13°11'55"
39-B	30.00'	47.12'	60.19'	113.48'	N 15°48'46" E	36°59'45"
39-C	170.00'	115.70'	60.19'	9.24'	N 34°09'35" E	02°18'07"
39-D	230.00'	8.24'	4.82'	9.24'	N 18°28'55" E	29°03'53"
40	230.00'	116.67'	59.82'	115.43'	N 02°23'28" E	03°06'20"
41	230.00'	12.47'	6.24'	12.47'	N 08°58'44" E	12°16'51"
45	30.00'	6.43'	3.23'	6.42'	N 31°04'25" E	35°54'32"
46-A	30.00'	18.80'	9.72'	18.50'	N 08°59'32" E	80°04'17"
46-B	60.00'	83.65'	50.41'	77.19'	N 69°00'15" W	75°55'18"
47	60.00'	79.50'	48.81'	73.82'	N 38°15'05" E	69°38'02"
48	60.00'	72.92'	41.73'	68.52'	N 21°58'50" W	50°45'09"
48-A	60.00'	53.15'	28.46'	51.43'	N 23°15'23" W	48°11'23"
49-B	30.00'	25.23'	13.42'	24.50'	N 11°31'30" E	21°22'25"
54	170.00'	63.42'	32.08'	63.05'	N 28°45'40" E	13°05'55"
55-A	170.00'	38.86'	19.52'	38.78'	N 33°01'10" E	04°34'57"
55-B	230.00'	18.40'	9.20'	18.39'	N 33°01'10" E	04°34'57"



**Mountainside Farms**  
**SUBDIVISION PHASE 2**  
 BEING PART OF ORIGINAL CONCORD TOWNSHIP LOT No. 10 AND 11, TRACT 4,  
 TOWNSHIP OF CONCORD - LAKE COUNTY - OHIO



**GUTOSKEY & ASSOCIATES INC.**  
 Civil Engineers and Surveyors  
 17878 MURN ROAD, SUITE #3 TEL (440) 543-8900  
 CLEVELAND FALLS, OHIO 44023 FAX (440) 543-7176



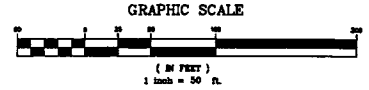
- = MONUMENT BOX SET
- = MONUMENT BOX FOUND
- = 3/4" IRON PIN SET (I.D. GUTOSKEY, 7567)
- = 5/8" IRON PIN FOUND (I.D. GUTOSKEY, 7567)

MOUNTAINSIDE FARMS, L.L.C.  
 DOC. NO. 2002034653

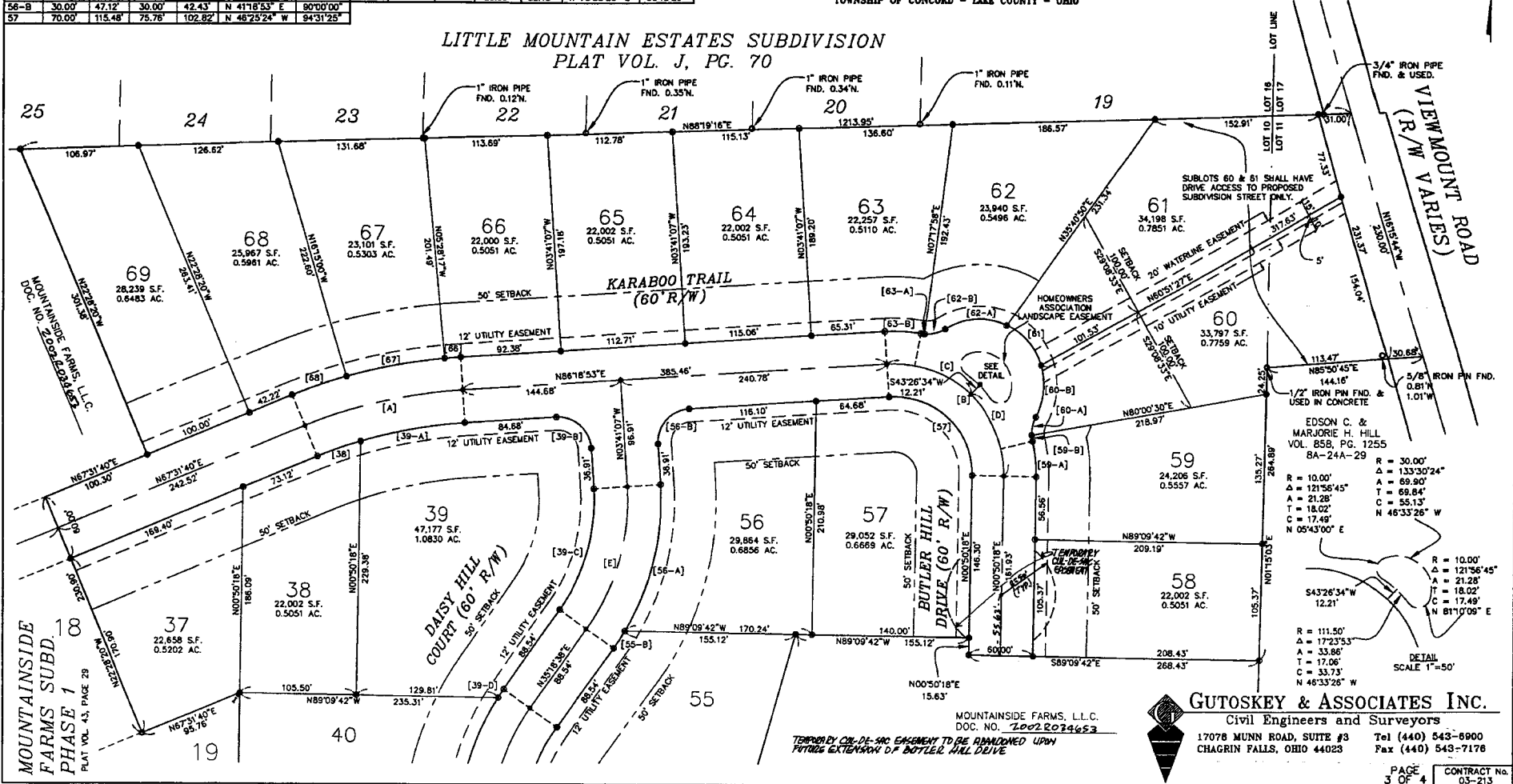
CURVE DATA					CURVE DATA								
CURVE	RADIUS	LENTH	TANGENT	CHORD	BEARING	DELTA	CURVE	RADIUS	LENTH	TANGENT	CHORD	BEARING	DELTA
A	450.00'	147.50'	74.44'	146.89'	N 76°53'17" E	16°47'13"	59-A	130.00'	32.51'	16.34'	32.42'	N 08°19'32" W	14°19'59"
B	100.00'	164.96'	108.22'	146.89'	N 46°25'24" W	94°31'25"	59-B	30.00'	5.47'	2.74'	5.46'	N 08°16'10" W	102°8'22"
C	100.00'	82.25'	43.61'	79.96'	N 70°07'16" W	47°07'41"	60-A	30.00'	16.98'	8.72'	16.75'	N 13°09'48" E	32°25'35"
D	100.00'	82.72'	43.89'	80.38'	N 22°31'34" W	47°23'44"	60-B	60.00'	48.95'	25.93'	47.60'	N 06°00'21" E	46°44'31"
E	200.00'	136.12'	70.82'	133.51'	N 15°48'46" E	36°59'45"	61	60.00'	50.00'	26.56'	48.57'	N 41°14'19" W	47°44'48"
38	420.00'	40.95'	20.50'	40.95'	N 70°19'19" E	09°35'16"	62-A	60.00'	60.09'	32.84'	57.61'	N 86°11'55" E	57°22'45"
39-A	430.00'	96.75'	48.58'	95.54'	N 72°42'56" E	13°11'55"	62-B	30.00'	18.42'	10.07'	18.09'	N 76°03'26" E	37°05'48"
39-B	30.00'	47.12'	30.00'	42.43'	N 48°41'07" W	90°00'00"	63-A	30.00'	3.02'	1.51'	3.02'	N 82°30'55" W	05°49'09"
39-C	170.00'	115.70'	60.19'	113.48'	N 15°48'46" E	36°59'45"	63-B	130.00'	31.90'	16.03'	31.82'	N 86°39'19" W	14°03'36"
39-D	230.00'	9.24'	4.62'	9.24'	N 34°09'35" E	02°18'07"	66	480.00'	14.96'	7.48'	14.96'	N 65°25'18" E	01°47'10"
55-B	230.00'	18.40'	9.20'	18.39'	N 33°01'10" E	04°34'57"	67	480.00'	30.30'	45.26'	90.17'	N 79°08'22" E	10°46'43"
56-A	230.00'	138.14'	71.23'	136.08'	N 15°31'17" E	34°24'48"	68	480.00'	52.13'	26.09'	52.10'	N 70°38'20" E	06°13'20"
56-B	30.00'	47.12'	30.00'	42.43'	N 41°16'53" E	90°00'00"							
57	70.00'	115.46'	75.76'	102.82'	N 46°25'24" W	94°31'25"							



**SUBDIVISION PHASE 2**  
 BEING PART OF ORIGINAL CONCORD TOWNSHIP LOT No. 10 AND 11, TRACT 4,  
 TOWNSHIP OF CONCORD - LAKE COUNTY - OHIO



**LITTLE MOUNTAIN ESTATES SUBDIVISION**  
 PLAT VOL. J, PG. 70



**GUTOSKEY & ASSOCIATES INC.**  
 Civil Engineers and Surveyors  
 17078 MUNN ROAD, SUITE #3  
 CHAGRIN FALLS, OHIO 44023  
 Tel (440) 543-8900  
 Fax (440) 543-7178