

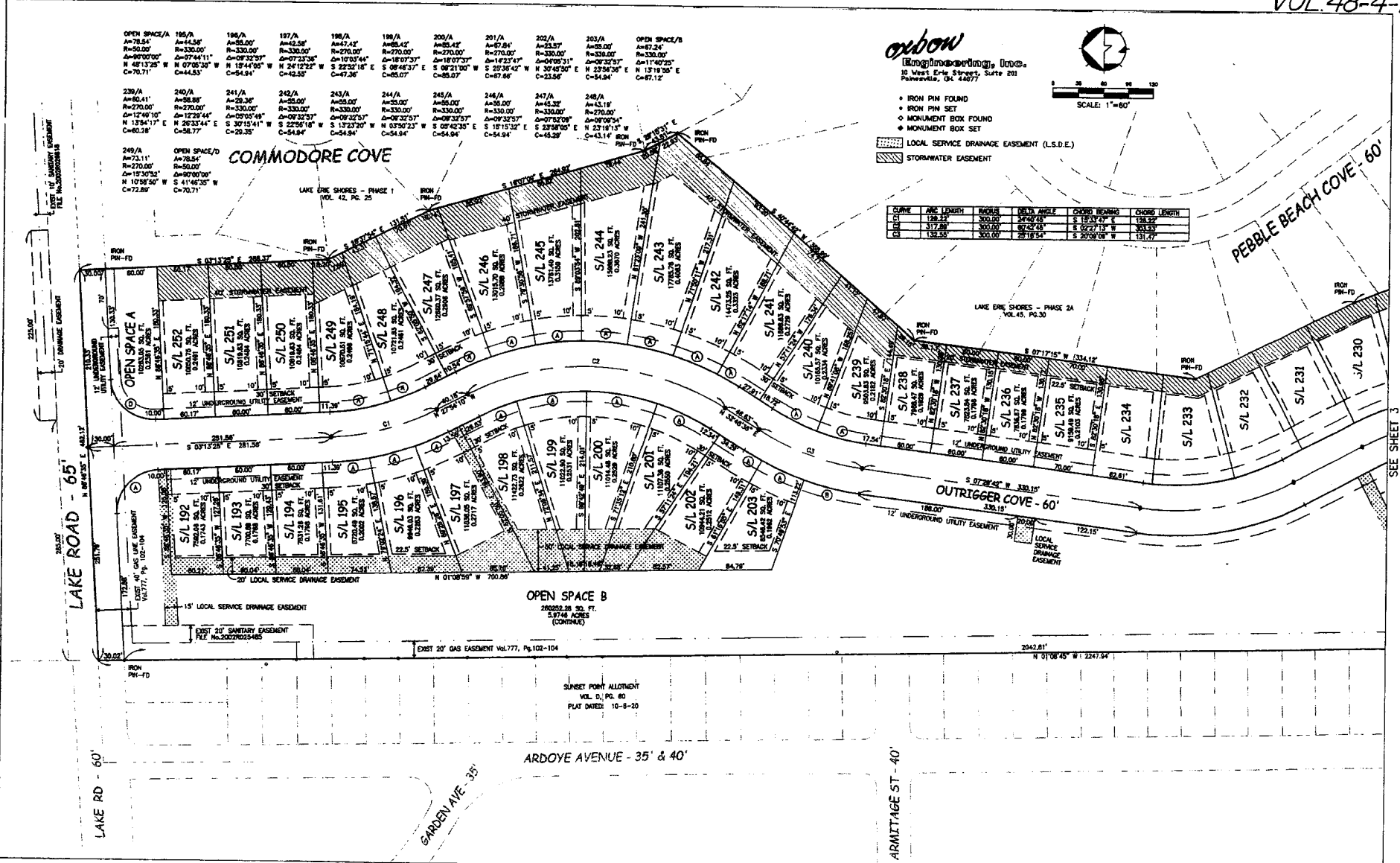
185/A A=78.54' R=330.00' Δ=90°00'00" N 48°13'25" W C=70.71'	186/A A=44.58' R=330.00' Δ=90°00'00" N 07°05'30" W C=44.53'	186/A A=44.58' R=330.00' Δ=90°00'00" N 07°05'30" W C=44.53'	187/A A=42.58' R=330.00' Δ=90°00'00" N 24°12'25" W C=42.53'	188/A A=47.42' R=330.00' Δ=90°00'00" N 24°12'25" W C=47.36'	189/A A=65.42' R=330.00' Δ=90°00'00" N 08°44'37" E C=65.07'	200/A A=65.42' R=330.00' Δ=90°00'00" N 08°44'37" E C=65.07'	201/A A=67.84' R=330.00' Δ=90°00'00" N 18°07'37" E C=67.66'	202/A A=25.37' R=330.00' Δ=90°00'00" N 30°48'30" E C=25.36'	203/A A=58.00' R=330.00' Δ=90°00'00" N 23°34'36" E C=54.94'	OPEN SPACE/B A=67.24' R=330.00' Δ=90°00'00" N 13°18'30" E C=67.12'
239/A A=78.54' R=330.00' Δ=90°00'00" N 48°13'25" W C=70.71'	240/A A=44.58' R=330.00' Δ=90°00'00" N 07°05'30" W C=44.53'	241/A A=29.36' R=330.00' Δ=90°00'00" N 26°33'44" E C=29.35'	242/A A=29.36' R=330.00' Δ=90°00'00" N 26°33'44" E C=29.35'	243/A A=35.00' R=330.00' Δ=90°00'00" S 30°10'41" W C=34.84'	243/A A=35.00' R=330.00' Δ=90°00'00" S 30°10'41" W C=34.84'	244/A A=35.00' R=330.00' Δ=90°00'00" S 13°27'20" W C=34.94'	245/A A=35.00' R=330.00' Δ=90°00'00" S 13°27'20" W C=34.94'	246/A A=35.00' R=330.00' Δ=90°00'00" S 09°42'35" E C=34.94'	247/A A=45.32' R=330.00' Δ=90°00'00" S 23°58'00" E C=45.29'	248/A A=43.18' R=330.00' Δ=90°00'00" N 23°18'15" W C=43.14'

orbis
 10 West Erie Street, Suite 201
 Painesville, OH 44077

SCALE: 1"=60'

LEGEND:
 ● IRON PIN FOUND
 ○ IRON PIN SET
 ◆ MONUMENT BOX FOUND
 ◆ MONUMENT BOX SET
 ▨ LOCAL SERVICE DRAINAGE EASEMENT (L.S.D.E.)
 ▩ STORMWATER EASEMENT

CURVE	ARC LENGTH	RADIUS	BEARING ANGLE	CHORD BEARING	CHORD LENGTH
CL1	158.54'	300.00'	249°40'00"	S 19°24'29" E	148.89'
CL2	317.08'	300.00'	89°24'00"	S 02°27'15" W	303.23'
CL3	158.54'	300.00'	28°18'54"	S 20°09'09" W	151.47'



OPEN SPACE/C	204/A	208/A	211/A	212/A	215/A	216/A	217/A	218/A	221/A	222/A	228/A
A=208.77	A=91.18	A=44.82	A=15.24	A=30.77	A=59.28	A=4.20	A=7.11	A=45.15	A=87.71	A=6.53	A=33.38
R=338.08	R=270.88	R=270.88	R=270.88	R=270.88	R=330.00	R=330.00	R=270.88	R=270.88	R=330.00	R=330.00	R=330.00
Δ=3215.03°	Δ=1920.44°	Δ=0928.04°	Δ=0314.05°	Δ=0831.50°	Δ=1017.36°	Δ=0047.51°	Δ=0137.35°	Δ=0934.51°	Δ=0837.53°	Δ=0119.02°	Δ=0947.31°
N 107°48' W	S 18°44'58" E	S 03°40'35" E	S 02°40'29" W	S 07°33'27" W	N 08°40'34" E	N 00°07'51" E	N 00°28'13" E	N 08°01'56" E	S 06°30'25" W	S 01°37'28" W	S 01°50'16" E
C=203.52	C=80.75	C=44.56	C=15.24	C=30.76	C=58.20	C=4.20	C=7.11	C=45.15	C=86.67	C=6.53	C=33.35

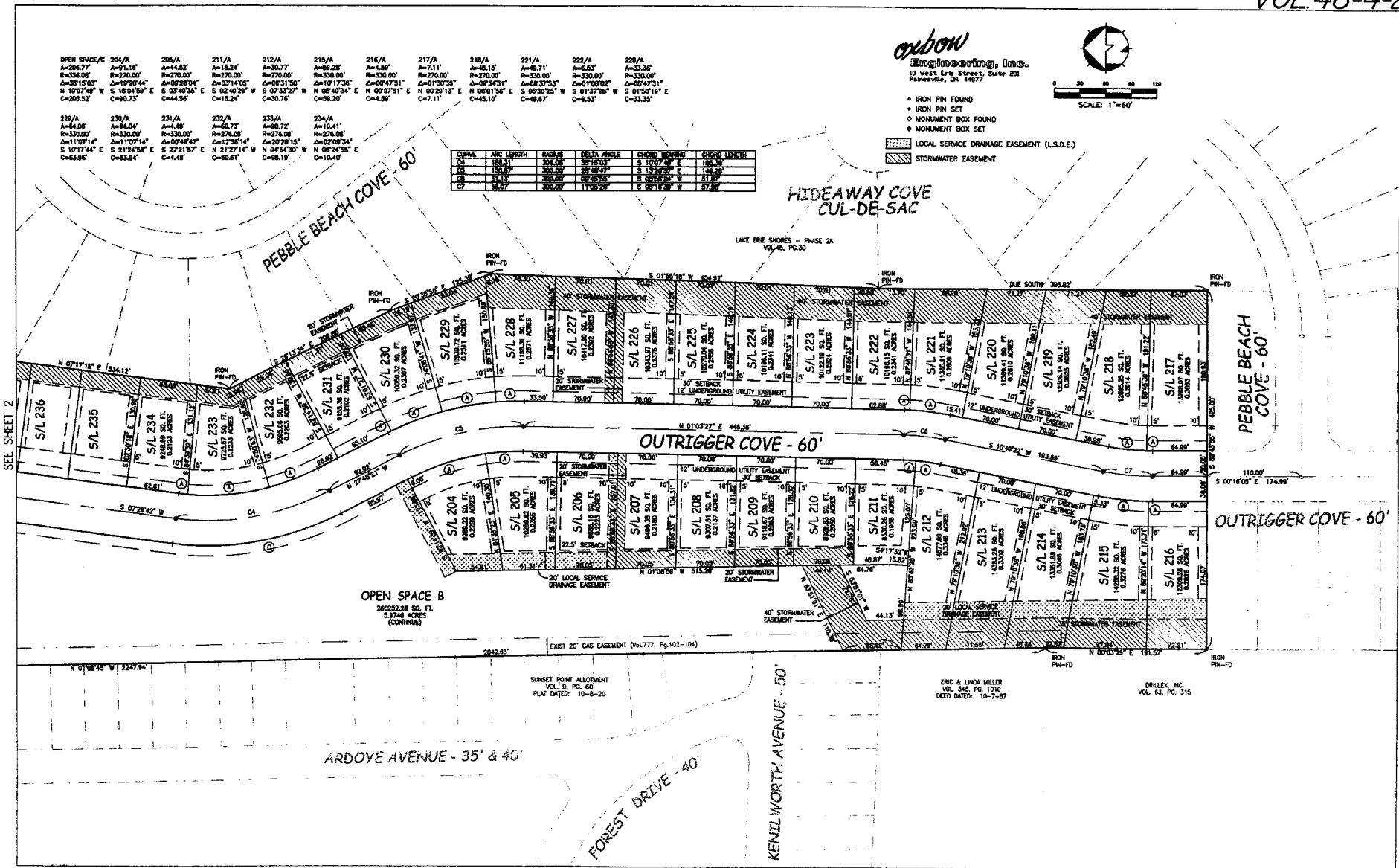
229/A	230/A	231/A	232/A	233/A	234/A
A=84.08	A=84.08	A=4.48	A=80.75	A=80.75	A=10.41
R=330.00	R=330.00	R=330.00	R=270.88	R=270.88	R=270.88
Δ=1107.14°	Δ=1107.14°	Δ=0046.47°	Δ=1236.14°	Δ=0728.15°	Δ=0209.34°
S 107°14'4" E	S 21°24'38" E	S 27°21'53" E	N 21°27'14" W	N 04°54'30" W	N 08°24'58" E
C=83.98	C=83.94	C=4.48	C=80.81	C=80.19	C=10.40

CHORD	ARC LENGTH	RADIUS	DELTA ANGLE	CHORD BEARING	CHORD LENGTH
188.31	308.08	387.19	107.74°	S 68.30°	188.31
18.47	308.08	287.48	15.29°	S 15.29°	18.47
18.47	308.08	287.48	15.29°	S 15.29°	18.47
34.07	300.00	1700.26	57.86°	S 57.86°	34.07

oxbow
 10 West Elm Street, Suite 201
 Palmersville, GA 31677



- IRON PIN FOUND
- IRON PIN SET
- MONUMENT BOX FOUND
- MONUMENT BOX SET
- ▨ LOCAL SERVICE DRAINAGE EASEMENT (L.S.D.E.)
- ▨ STORMWATER EASEMENT



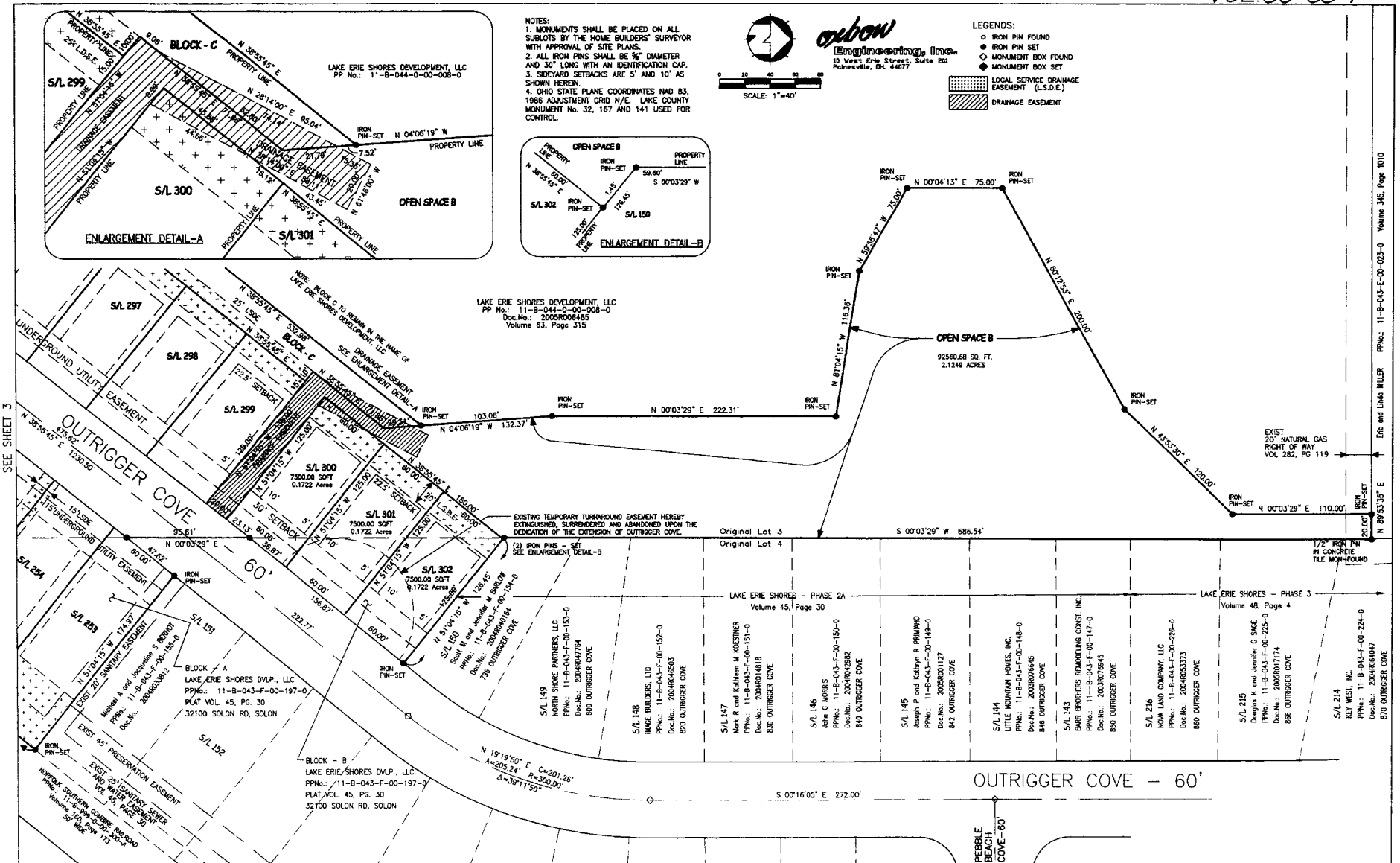
SEE SHEET 2

OPEN SPACE B
 24052.28 SQ. FT.
 5.974 ACRES
 (CONTINUE)

SUNSET POINT ALLOTMENT
 VOL. 4, PG. 60
 PLAT DATED: 10-8-20

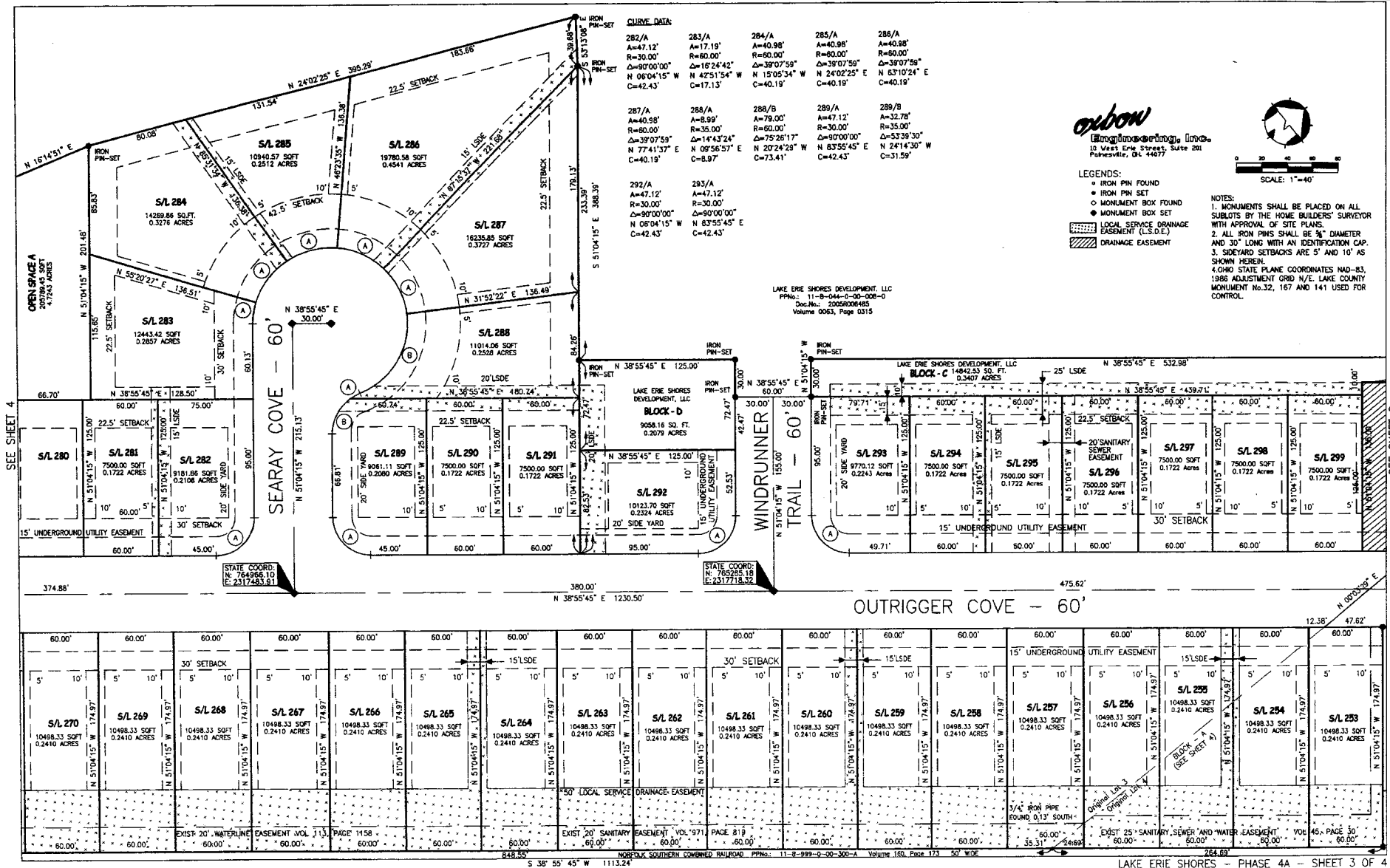
ERIC & LINDA MILLER
 VOL. 345, PG. 1010
 DEED DATED: 10-7-87

DRILLEX, INC.
 VOL. 83, PG. 515



SEE SHEET 3

Eric and Linda Miller PPNs: 11-B-043-E-00-023-0 Volume 345, Page 1010

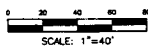


SEE SHEET 4

SEE SHEET 2



orbion
Engineering, Inc.



- IRON PIN FOUND
- IRON PIN SET
- ◊ MONUMENT BOX FOUND
- ◊ MONUMENT BOX SET
- LOCAL SERVICE DRAINAGE EASEMENT (L.S.D.E.)
- DRAINAGE EASEMENT

NOTES:
 1. MONUMENTS SHALL BE PLACED ON ALL SUBLOTS BY THE HOME BUILDERS' SURVEYOR WITH APPROVAL OF SITE PLANS.
 2. ALL IRON PINS SHALL BE 3/8" DIAMETER AND 30" LONG WITH AN IDENTIFICATION CAP. 3. SIDYARD SETBACKS ARE 5' AND 10' AS SHOWN HEREIN.
 4. OHIO STATE PLANE COORDINATES NAD-83, 1985 ADJUSTMENT GRID N/E. LAKE COUNTY MONUMENT No.32, 167 AND 141 USED FOR CONTROL.

LAKE ERIE SHORES DEVELOPMENT, LLC
 PPNo.: 11-B-044-0-00-006-0
 Doc.No.: 2005R006485
 Volume 63, Page 315

CURVE DATA:

271/A A=26.76' R=1121.28' Δ=01°22'02" S 39°38'46" W C=26.76'	272/A A=70.12' R=1121.28' Δ=05°34'59" S 42°05'17" W C=70.11'	273/A A=116.63' R=1121.28' Δ=05°57'34" S 46°51'33" W C=116.58'	273/B A=24.59' R=60.00' Δ=23°29'05" N 50°40'18" E C=24.42'
274/A A=40.98' R=60.00' Δ=39°07'42" N 81°58'41" E C=40.18'	275/A A=43.90' R=60.00' Δ=41°55'24" N 57°29'45" W C=42.93'	276/A A=40.98' R=60.00' Δ=13°57'02" N 16°58'12" W C=40.18'	277/A A=40.98' R=60.00' Δ=39°07'42" N 22°09'30" E C=40.18'
278A A=33.25' R=35.00' Δ=54°25'52" N 80°05'43" E C=32.01'	278/B A=68.68' R=60.00' Δ=65°35'18" N 74°31'00" E C=64.99'	279/A A=8.52' R=35.00' Δ=13°57'02" S 45°54'16" W C=8.50'	

NOK CHINA, INC.
 PPNo. 11-B-044-0-00-007-0
 Doc.No. 2005R006488

1'21" CONCRETE MONUMENT WITH BRASS PLUG FOUND
 N 01°29'15" W 1.80'
 3/4" IRON PIPE FOUND
 58.61' S 89°43'45" W
 EXIST 10" SANITARY EASEMENT VOL. 971, PG. 819
 PARCEL No.2 EXIST SANITARY EASEMENT VOL. 971, PG. 819
 CAPPED 5/8" IP FOUND

EXIST 20" WATERLINE EASEMENT VOL. 115, PAGE 1158
 A=761.74' R=1121.28' Δ=38°55'25" S 69°18'03" W C=747.17'
 A=975.24' R=1121.28' Δ=49°50'00" S 63°50'45" W C=944.79'

EXIST 20" SANITARY EASEMENT VOL. 971, PAGE 819

NORFOLK SOUTHWEST COMBINED RAILROAD
 PPNo. 11-B-099-0-00-300-A
 50' WIDE Volume 160, Page 173

DRILLEX, INC.
 Volume 63, Page 315
 PPNo. 11-B-044-0-00-007-0

