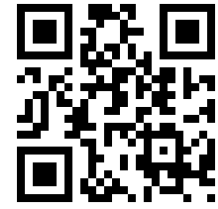


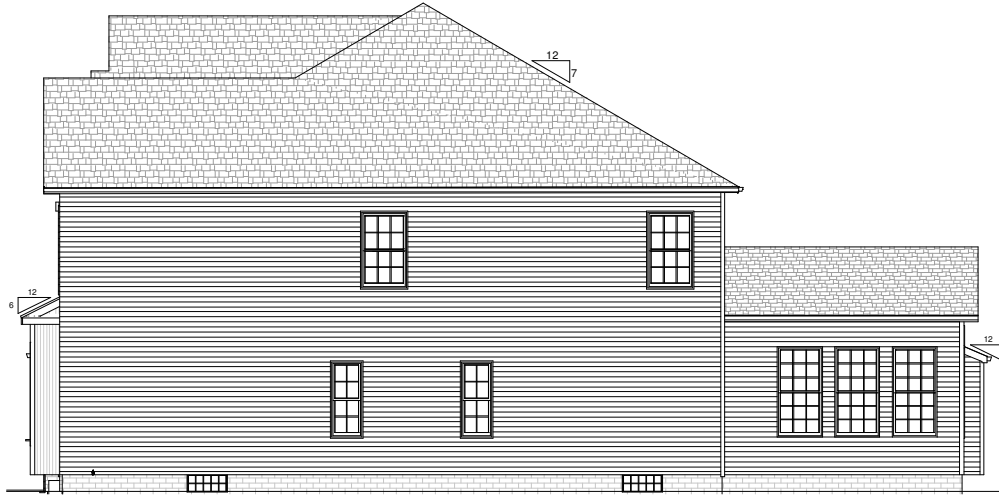
THIS SHEET IS FOR INFORMATIONAL PURPOSES ONLY. ANY UPDATES AND CHANGES MAY NOT BE INDICATED. THE HOME WILL BE CONSTRUCTED PER CUSTOMER APPROVED PLAN AND SPECIFICATION SHEETS. ALL AVAILABLE OPTIONS AND FEATURES MAY NOT BE DEPICTED. PLEASE CONTACT A SALES REPRESENTATIVE FOR MORE INFORMATION.



B.R. Knez Construction, Inc.  
 8023 Crite Road - Suite 250  
 Concord Township, OH 44077  
 (440)710-0711 Fax: 639-6485  
 www.knez.net



Front



Right



Left



Rear



Monterey  
 3-CarFront-Load Garage



Monterey Creek  
 SL 27  
 Concord Township, Ohio

SHEET 1  
 6/20/2012

Legacy Standards

NOTE: This floorplan is the exclusive property of B.R. Knez Construction, Inc. and may not be duplicated or modified in any way without the expressed permission of the company. Some optional features may be shown. Actual homes constructed per agreed upon plan and specification sheet.

THIS SHEET IS FOR INFORMATIONAL PURPOSES ONLY. ANY UPDATES AND CHANGES MAY NOT BE INDICATED. THE HOME WILL BE CONSTRUCTED PER CUSTOMER APPROVED PLAN AND SPECIFICATION SHEETS. ALL AVAILABLE OPTIONS AND FEATURES MAY NOT BE DEPICTED. PLEASE CONTACT A SALES REPRESENTATIVE FOR MORE INFORMATION.

**Plan Data**

Lower 1183 sq ft  
 Main 1610 sq ft  
 2nd 1579 sq ft  
 Total 4372 sq ft

Width 52 ft  
 Depth 61 ft  
 Bedrooms 4  
 Baths 2.5 (+ .5)  
 Garage 3 car



B.R. Knez Construction, Inc.  
 8023 Crite Road - Suite 250  
 Concord Township, OH 44077  
 (440)710-0711 Fax: 639-6485  
 www.knez.net



**Monterey**  
 3-CarFront-Load Garage



NOTE: This floorplan is the exclusive property of B.R.Knez Construction, Inc. and may not be duplicated or modified in any way without the expressed permission of the company. Some optional features may be shown. Actual homes constructed per agreed upon plan and specification sheet.

Monterey Creek  
 SL 27 Caribben Creek  
 Concord Township, Ohio

SHEET **2**  
 6/23/2012

Legacy Standards

